

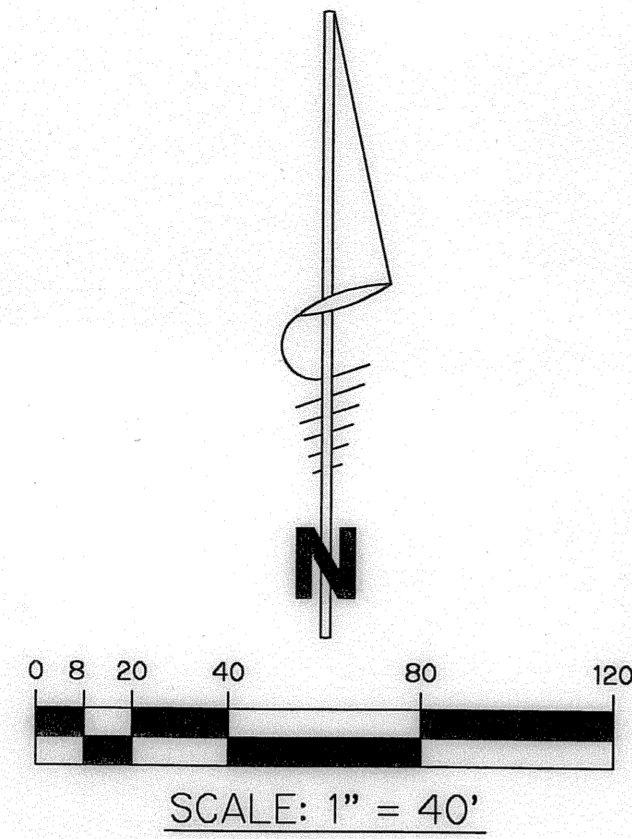
EQUUS AGR - PUD PHASE THREE

BEING A REPLAT OF A PORTION OF TRACTS 112 THROUGH 116, 118, AND ALL OF TRACT 117, BLOCK 45;
 ALL OF TRACTS 11 THROUGH 13, 16 THROUGH 19, AND A PORTION OF TRACTS 8, 9, 10, 14, 15, 20, AND 21, BLOCK 51;
 THAT PORTION OF THE 30' ROAD LYING BETWEEN SAID TRACTS 117 AND 118 ABUTTING SAID TRACTS;
 THAT PORTION OF THE 50' ROAD LYING BETWEEN SAID BLOCKS 45 AND 51 ABUTTING SAID TRACTS;
 THE NORTH 15 FEET OF THE 30' ROAD LYING SOUTH OF SAID TRACTS 16 THROUGH 20, BLOCK 51;
 AND THE EAST 12.5 FEET OF THE 25' ROAD LYING WEST OF SAID TRACTS 15 AND 16, BLOCK 51;
 PALM BEACH FARMS COMPANY PLAT No.3, RECORDED IN PLAT BOOK 2, PAGE 45, OF THE PUBLIC RECORDS OF
 PALM BEACH COUNTY, FLORIDA; LYING IN SECTIONS 18 AND 19, TOWNSHIP 45 SOUTH, RANGE 42 EAST,
 PALM BEACH COUNTY, FLORIDA

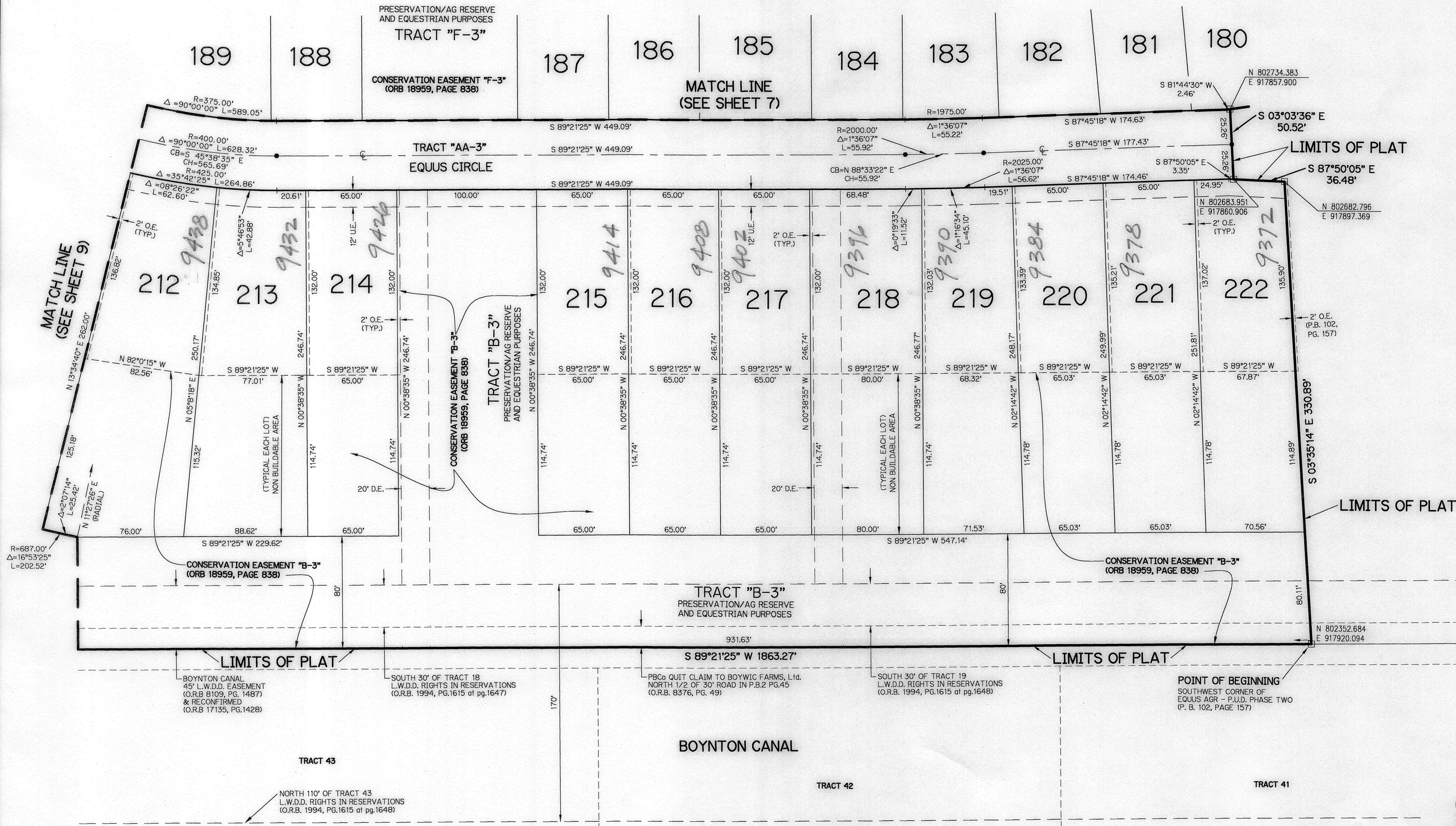
SHEET 8 OF 10 APRIL, 2005
 PETITION 2000-71

BROWN & PHILLIPS, INC.
 CERTIFICATE OF AUTHORIZATION # LB 6473
 901 NORTHPOINT PARKWAY, SUITE 305
 WEST PALM BEACH, FLORIDA 33407
 561-615-3988, 561-615-3986 FAX

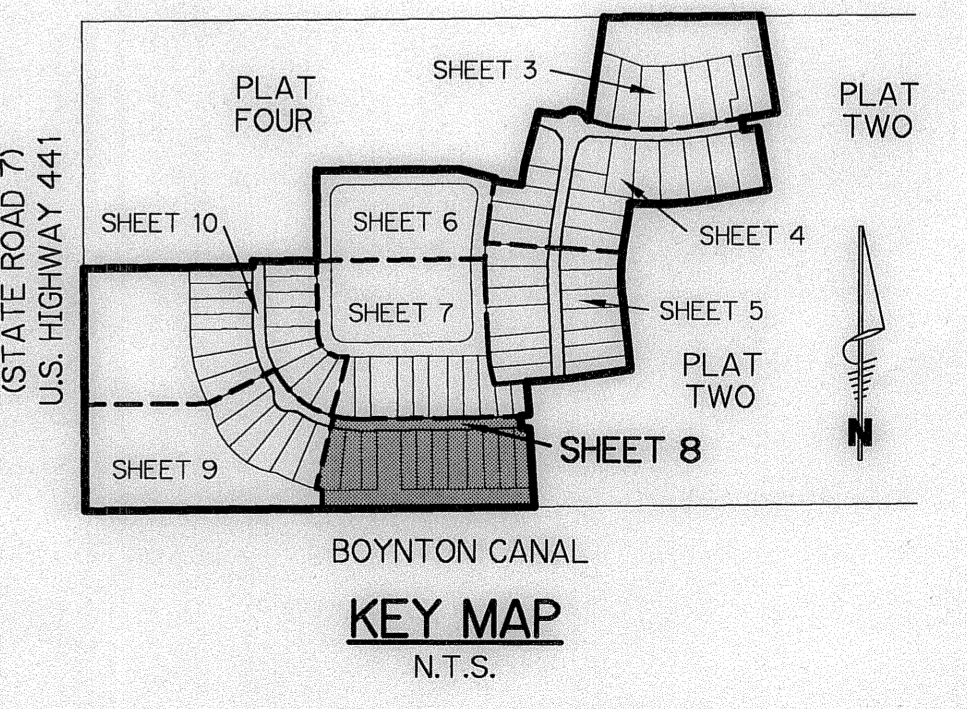
152



- LEGEND:**
- - SET PERMANENT REFERENCE MONUMENT, L.B. #6473, UNLESS NOTED OTHERWISE
 - - FOUND PERMANENT REFERENCE MONUMENT, L.B. #7236, UNLESS NOTED OTHERWISE
 - - SET PERMANENT CONTROL POINT, L.B. #6473
 - - FOUND PERMANENT CONTROL POINT, L.B. #6473
 - Δ - CENTRAL ANGLE
 - ΔE - BUFFER EASEMENT
 - CB - CHORD BEARING
 - CH - CHORD DISTANCE
 - CL - CENTERLINE
 - D.B. - DEED BOOK
 - D.E. - DRAINAGE EASEMENT
 - L - ARC LENGTH
 - L.A.E. - LIMITED ACCESS EASEMENT
 - L.M.A.E. - LAKE MAINTENANCE ACCESS EASEMENT
 - L.M.E. - LAKE MAINTENANCE EASEMENT
 - L.W.D.D. - LAKE WORTH DRAINAGE DISTRICT
 - NR - NOT RADIAL
 - N.T.S. - NOT TO SCALE
 - O.R.B. - OFFICIAL RECORD BOOK
 - O.E. - OVERHANG EASEMENT
 - P.B. - PLAT BOOK
 - P.C.P. - PERMANENT CONTROL POINT
 - PGS. - PAGES
 - P.O.B. - POINT OF BEGINNING
 - P.O.C. - POINT OF COMMENCEMENT
 - P.S.M. - PROFESSIONAL SURVEYOR AND MAPPER
 - R - RADIUS
 - R/W - RIGHT-OF-WAY
 - U.E. - UTILITY EASEMENT
 - P.B.C.U.E. - PALM BEACH COUNTY UTILITY EASEMENT
 - AGR or AG - AGRICULTURE



EQUUS AGR - PUD PHASE TWO
 (P.B. 102, PG. 157)



SUBDIVISION EQUUS AGR - PHASE THREE
 BOOK 105 PAGE 152 FLOOD MAP # 105 A
 ZONING AGR/PUD
 QUAD # 49
 SE
 TIAL 1028
 PUD NAME

BOYNTON CANAL
 45' L.W.D.D. EASEMENT
 (O.R.B. 3109, PG. 1487)
 & RECONFIRMED
 (O.R.B. 17135, PG. 1428)

SOUTH 30' OF TRACT 18
 L.W.D.D. RIGHTS IN RESERVATIONS
 (O.R.B. 1994, PG. 1615 at pg. 1647)

P.B.C. QUIT CLAIM TO BOYNTON FARMS, LTD.
 NORTH 1/2 OF 30' ROAD IN P.B.2 PG.45
 (O.R.B. 6376, PG. 49)

SOUTH 30' OF TRACT 19
 L.W.D.D. RIGHTS IN RESERVATIONS
 (O.R.B. 1994, PG. 1615 at pg. 1648)

POINT OF BEGINNING
 SOUTHWEST CORNER OF
 EQUUS AGR - PUD PHASE TWO
 (P.B. 102, PAGE 157)

PALM BEACH FARMS Co. PLAT No.3
 (P.B. 2, PG. 45, BLOCK 51)